

Aquatic Macroinvertebrates Characteristics Chart

This chart was designed to aid in the identification of aquatic macroinvertebrates and is a supplement to the dichotomous key in Chapter 4 of your Introductory Notebook, Stream Insects & Crustaceans “blue bug card” and the Key to Macroinvertebrate Life in the River.

	Head							Thorax					Abdomen									
	Flattened body	Shell	Caterpillar-like	Distinct head	Large eyes	Obvious antennae	Obvious mouth parts	Mask-like lower lip	No legs	Prolegs	Six segmented legs	More than six segmented legs	Gills	Hard plate(s)	Wings/Wing pads	Gills	Hard plate(s)	Lateral filaments	Prolegs	Hooked prolegs	Suction pad(s)	Tail(s)
1. Stonefly Nymph	✓			×	×					×	✓		×									×
2. Caddisfly Larva				×						×		×	✓						×			
3. Mayfly Nymph	✓			×	✓					×			×	×								×
4a. Riffle Beetle Larva				×						×		×			×							
4b. Riffle Beetle Adult				×	×					×		×										
5. Water Penny Larva	×			×						×		×	✓	×								
6. Gilled Snail (right-handed)		×						×														
7. Dobsonfly Larva (hellgrammite)	✓			×		×				×		×		×		×		×				
8. Dragonfly Nymph	✓			×	×	×	×	×		×			×									
9. Sowbug	×				×					×		×			×							
10. Alderfly Larva	✓			×		×				×		×				×						×
11. Fishfly Larva	✓			×		×				×		×				×		×				
12. Damselfly Nymph				×	×	×	×	×		×			×									×
13. Clam/Mussel		×						×														
14. Scud	×			×	×					×		×			×							
15. Other Beetle Larva	✓			×	✓	×				×		✓		✓	✓							✓
16. Watersnipe Fly Larva			×					×									×					
17. Crane Fly Larva			×					×														
18. Crayfish				×	×					×		×			×							×
19. Aquatic Worm								×														
20. Black Fly Larva				×				×	×													×
21. Midge Fly Larva				×				×	×								×					
22. Leech	×							×														×
23. Pouch Snail (left-handed)		×						×														
24. Other Snails		×						×														

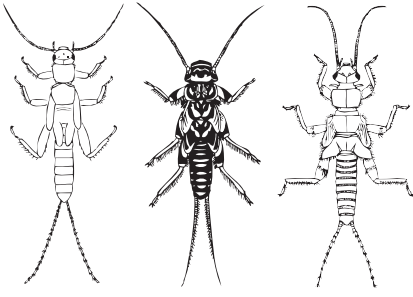
Key:
 × = present
 ✓ = sometimes present

Other macroinvertebrates you may encounter that are not included in our count/protocol.

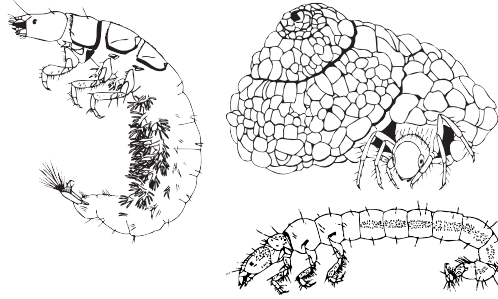
25. Planaria	×			×				×														
26. Deer Fly/Horse Fly			×					×														



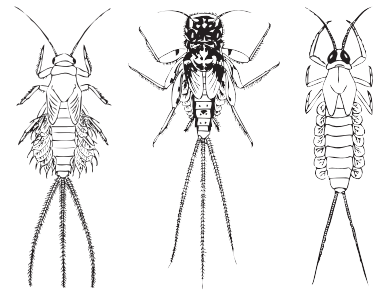
1. Stonefly Nymph



2. Caddisfly Larva



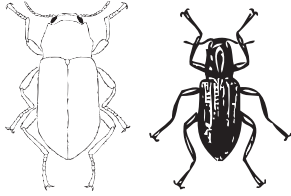
3. Mayfly Nymph



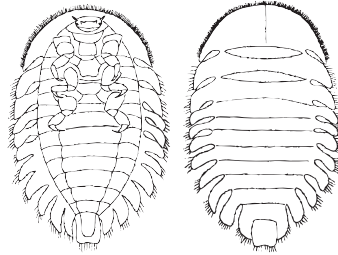
4a. Riffle Beetle Larva



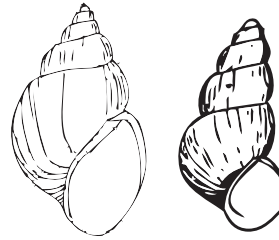
4b. Riffle Beetle Adult



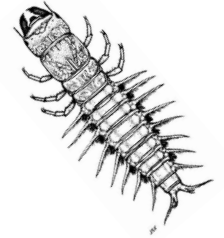
5. Water Penny Larva



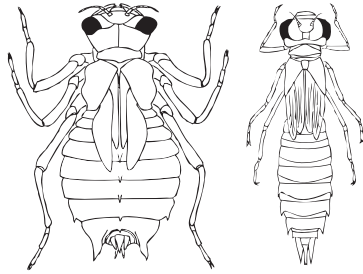
6. Gilled Snail (right-handed)



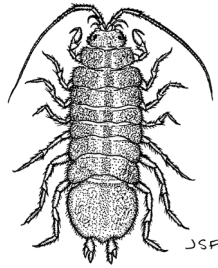
7. Dobsonfly Larva (hellgrammite)



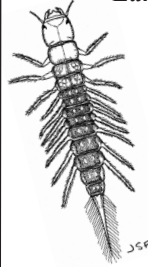
8. Dragonfly Nymph



9. Sowbug



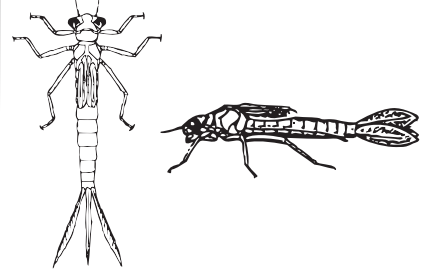
10. Alderfly Larva



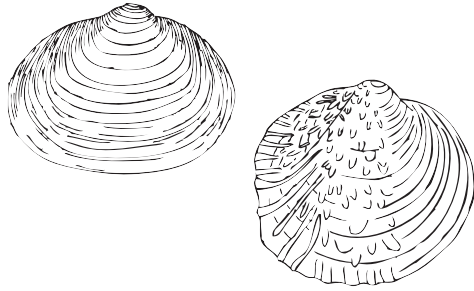
11. Fishfly Larva



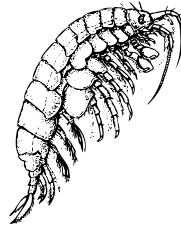
12. Damselfly Nymph



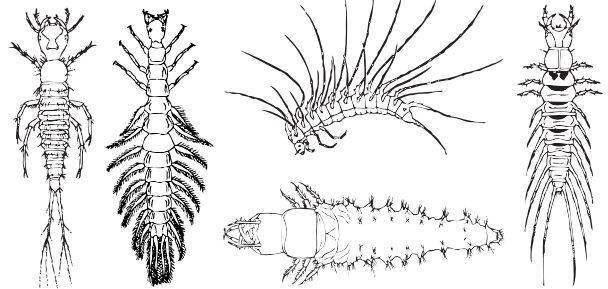
13. Clams/Mussels



14. Scud



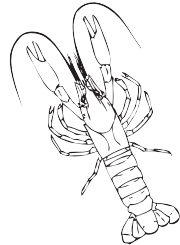
15. Other Beetle Larva



16. Watersnipe Fly Larva



18. Crayfish



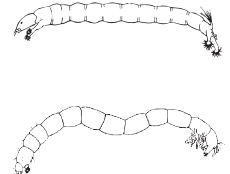
19. Aquatic Worm



20. Black Fly Larva



21. Midge Fly Larva



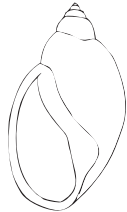
17. Crane Fly Larva



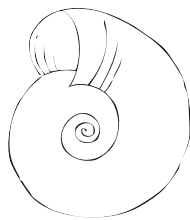
22. Leech



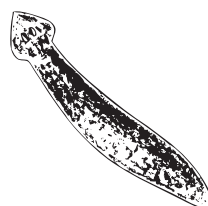
23. Pouch Snail (left-handed)



24. Other Snail



25. Planaria



26. Deer Fly/Horse Fly

